



Queensland University of Technology
Brisbane Australia

This is the author's version of a work that was submitted/accepted for publication in the following source:

[Weir, Ian James](#) (2012) Ian Weir Research Architect. In *Formations : New Practices in Australian Architecture*. Australian Institute of Architects, Canberra, A.C.T, pp. 52-55.

This file was downloaded from: <http://eprints.qut.edu.au/57261/>

© Copyright 2012 Australian Institute of Architects (of published chapter)

Notice: *Changes introduced as a result of publishing processes such as copy-editing and formatting may not be reflected in this document. For a definitive version of this work, please refer to the published source:*

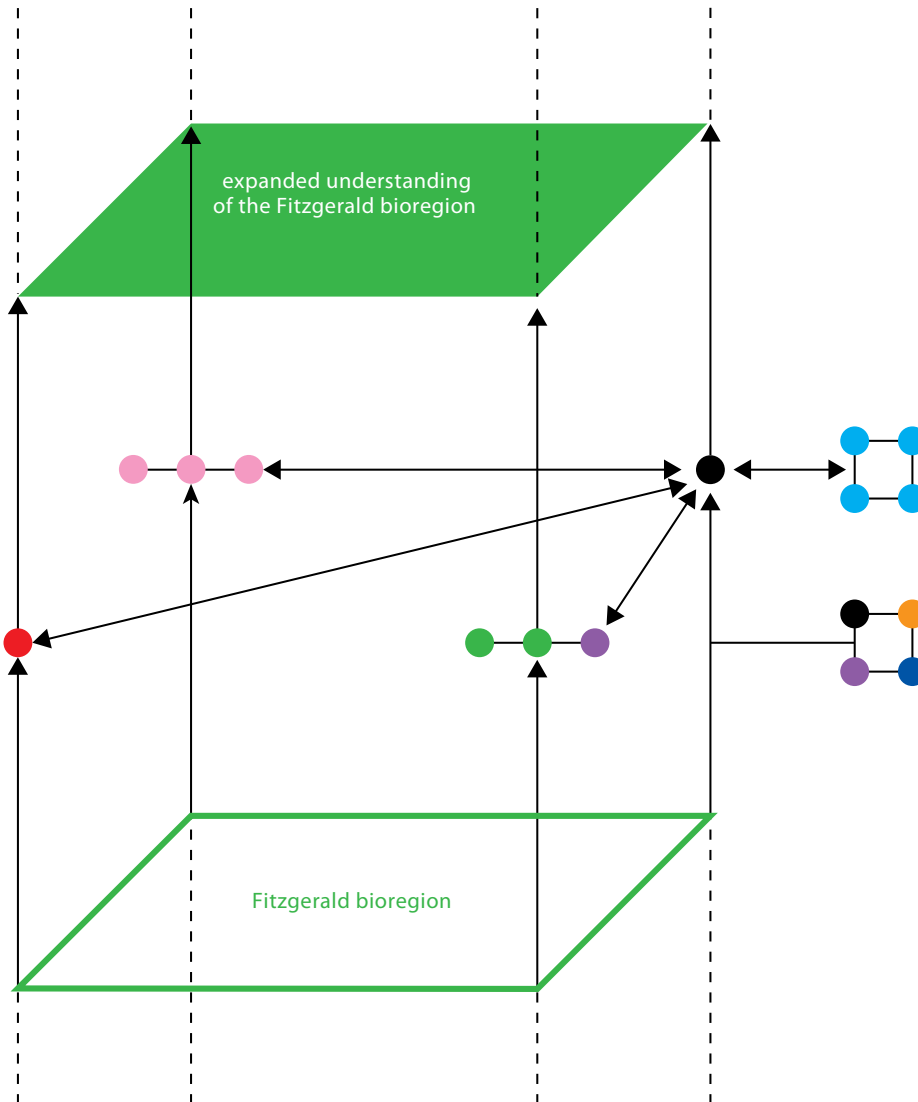
Ian Weir Research Architect

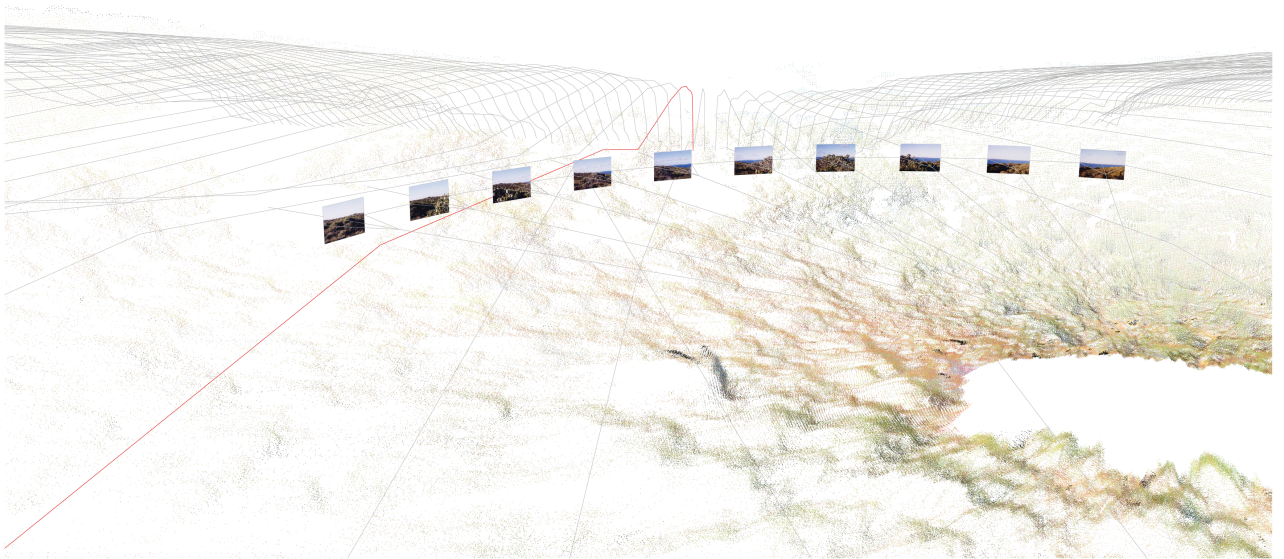
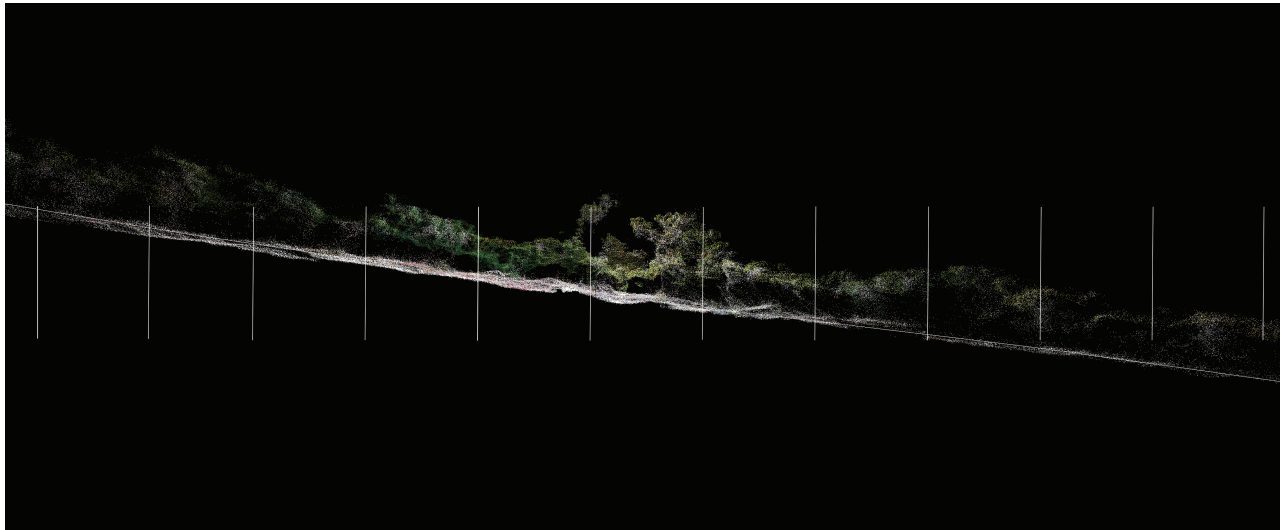
—— Dr Ian Weir's practice is driven by a passion for the Fitzgerald bioregion, a remote, bushfire-prone landscape on the south coast of Western Australia which is renowned internationally for its biodiversity. It is here that Dr Weir collaborates with individuals and organisations from the fields of ecology, botany, bushfire science, land surveying, landscape architecture and art practice, all of whom seek to expand understandings of this remarkable landscape. This diverse formation is constructed to address a significant problem beyond the scope of conventional modes of architectural practice: the reconciliation of biodiversity and bushfire with human habitation, through a multilateral approach using art practice, cartography and architectural intervention.

This mode of inquiry evolved from Dr Weir's PhD thesis entitled *Transformative Mappings* (2008) which explored how new surveying technologies such as laser scanning might produce for the architect more efficacious landscape representations. The agency of this form of representation is its ability to articulate a landscape idea or a shared understanding of landscape that leads to greater architectural specificity. The efficacy of this place-based, multilateral approach is demonstrated by the range of outputs and commissions which include exhibitions, town planning propositions, design studios, and notably, built works of bushfire-responsive architecture such as the nationally recognised H-House.

Legend

- Ian Weir
- Bushfire science
Klaus Braun
- Mix Architects
Nathan McQuoid
- Botanist
Barb Miller-Hornsey
- Gondwana
link organisation
- Undergrad
design students
- Architect
Daniela Simon
- Writer
Landscape architect
JP Quinton





Above
Before and After the Fire
 from Enacted Cartography
 Terrestrial laser Scans recorded
 before and after a bushfire
 in the Fitzgerald Bioregion

Below
Horizontal
 from Enacted Cartography
 Composite image
 including Terrestrial Laser Scan
 Photographs and
 GPS topographic survey

Opposite
Five Minutes at Nowanup
 from Lightsite
 Room-sized pin-hole camera
 erected throughout the
 Fitzgerald Bioregion
 for the Festival of Perth

